



GOOD MORNING

Have Good Trading Day

TUESDAY



Price is what you pay.
Value is what you get.

- Warren Buffet



MARKET PLUSE

INDIAN INDICES

NAME	CMP	NET CH.	%
SENSEX	28187	+72	+0.26
NIFTY	8543	+10	+0.12

INDIAN ADR'S

SYMBOL	CLOSE	GAIN/ LOSS %
DRREDDY	65.20	+1.32
HDFCBANK	62.97	+0.80
ICICIBK	10.38	+3.08
INFY	16.96	+0.30
TATAMOTOR	29.68	+0.07
WIPRO	12.27	-0.73

FII AND MF ACTIVITY

SYMBOL	In Crs.
FIIs Eq (Provisional)	350.41
FIIs Index Future	-188.32
FIIs Index Options	588.52
FIIs Stock Future	462.94
FIIs Stock Options	-48.52
DII's Eq (Provisional)	-33.36

CURRENCY

RBI RATE	03-AUG-2015
RUPEE - \$	63.9623
EURO	70.1602
YEN 10	51.5600
GBP	99.9347

MARKET PLUSE

GLOBAL INDICES

NAME	CMP	NET CH.	%
DOW	17598	-91	-0.52
NASDAQ	5115	-12	-0.25
NIKKEI	20526	-21	-0.10
HANG SENG	24316	-95	-0.39
SGX NIFTY	8560	-2	-0.02

WORLD COMMODITIES

FUTURE	U\$\$	CHANGES
CRUDE	45.46	+0.29
NATURAL GAS	2.772	+0.024
GOLD	1083.3	-6.10
SILVER	14.420	-0.095
COPPER	2.3410	-0.0050

WORLD EVENTS

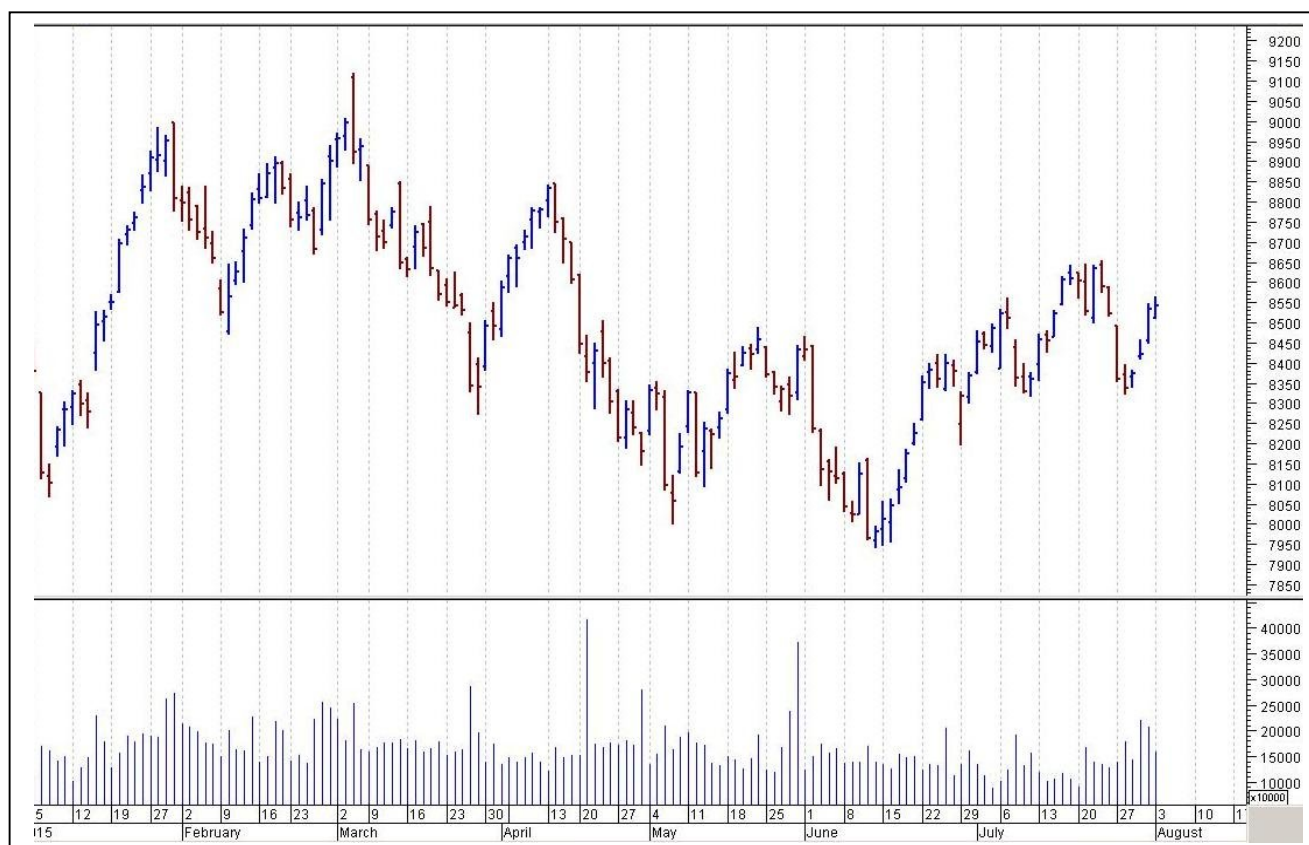
- US: Factory Orders m/m
- UK: Construction PMI

TOP STORY

- Hero Motocorp Q1 -Net profit up 33.3 percent at Rs 750.3 crore versus Rs 562.7 crore (YoY) -Total income down 1.2 percent at Rs 6,955.3 crore versus Rs 7,036.8 crore (YoY).
- Indiabulls Real Estate Q1 -Net profit at Rs 90.7 crore versus Rs 38.8 crore (YoY) -Total income up 21 percent at Rs 738.2 crore versus Rs 610 crore (YoY)
- Wockhardt recalls 5 million bottles of drugs from US
- Parliamentary panel on Land Bill agrees to withdraw 6 key amendments including dealing with consent clause.
- Strike continues at Neyveli Lignite as talks fail: BS
- SkyPower Southeast Asia wins 50 MW solar project at Rs 5.17/unit in Telangana
- Solar Energy company Acme bags solar bid for at least 446 MW in Telangana
- Government official says: -FIPB approves FDI proposals of Tata Global and Cadila Health



NIFTY CHART



MARKET COMMENTARY

Indian equity benchmarks, extending their winning streak for fourth straight session, managed to eke out slender gains. Earlier, markets after a sluggish start gained momentum and recaptured their crucial 28,200 (Sensex) and 8,550 (Nifty) bastions as sentiments remained up-beat on reports that the seasonally adjusted Nikkei India Manufacturing Purchasing Managers' Index (PMI)-a composite single-figure indicator of manufacturing performance came at a six-month high of 52.7 in July, from 51.3 in June. Sentiments also remained jubilant after Moody's said that the Reserve Bank of India (RBI) is likely to cut the benchmark rate by 0.25% in its monetary policy review today as inflation is likely to remain subdued on the back of average rainfall and lower commodity prices. Meanwhile, infrastructure output grew at a slower pace of 3 percent in June as sectors like coal and steel turned weak while oil and gas production fell -- bolstering the case for faster reforms and further rate cuts by the RBI. For today's trade nifty likely to trade in the range between 8560 – 8580 in the upper side and 8530 – 8510 in the lower side.

MARKET LEVELS

	CMP	SUPPORT LEVELS				RESISTANCE LEVELS			
NIFTY	8543	8530	8510	8470	8450	8560	8580	8595	8635
USDINR	64.3450	64.27	64.2	64.11	64.02	64.45	64.54	64.65	64.7



FUTURES CORNER

SCRIPS	CLOSE	SUPPORT	TARGET		REMARKS
		STOP LOSS	T1	T2	
PTC	72.75	71	74.5	76	TRADING CALL
SRTRANSFIN	922.85	910	936	946	TRADING CALL
EXIDEIND	150.2	148	153	156	TRADING CALL

EQUITY CORNER

SCRIPS	CLOSE	SUPPORT	TARGET		REMARKS
		STOP LOSS	T1	T2	
MOLDPACK	231.9	226	246	256	TRADING CALL
CAMLINFINE	114.8	112	119	126	TRADING CALL

DELIVERY BASED CALL / INVESTMENT CALL

SCRIPS	CMP	SUPPORT	TARGET		REMARK
		STOP LOSS	T1	T2	

BULK DEALS (BSE)

SCRIP	CLIENT NAME	BUY/SELL	QUANTITY	PRICE
NIL				

BULK DEALS (NSE)

SCRIP	CLIENT NAME	BUY/SELL	QUANTITY	PRICE
RJL	BLACKROCK SECURITIES PRIVATE LIMITED	SELL	125300	65.36
LIBERTSHOE	ANMOL GUPTA	SELL	124642	258.86

SCRIP'S IN F&O BAN

(To resume for normal trading below 80% of market wide limit required)

AMTEKAUTO



NIFTY 50 STOCKS: SUPPORT & RESISTANCE						
Symbol	Close	Support 1	Support 2	Pivot Point	Resistance1	Resistance2
ACC	1391.60	1376.48	1361.37	1391.22	1406.33	1421.07
AMBUJACEM	229.60	227.87	226.13	230.23	231.97	234.33
ASIANPAINT	877.50	872.33	867.17	880.17	885.33	893.17
AXISBANK	576.70	572.50	568.30	577.60	581.80	586.90
BAJAJ-AUTO	2504.90	2473.27	2441.63	2518.93	2550.57	2596.23
BANKBARODA	184.85	178.60	172.35	184.30	190.55	196.25
BHARTIARTL	418.90	416.57	414.23	419.78	422.12	425.33
BHEL	282.95	276.28	269.62	281.87	288.53	294.12
BOSCHLTD	25309.15	24839.40	24369.65	25139.45	25609.20	25909.25
BPCL	908.80	895.28	881.77	918.02	931.53	954.27
CAIRN	171.50	169.00	166.50	172.30	174.80	178.10
CIPLA	712.30	705.88	699.47	711.42	717.83	723.37
COALINDIA	431.70	426.05	420.40	434.25	439.90	448.10
DRREDDY	4143.90	4071.15	3998.40	4117.40	4190.15	4236.40
GAIL	354.20	349.83	345.47	352.67	357.03	359.87
GRASIM	3738.25	3716.17	3694.08	3732.08	3754.17	3770.08
HCLTECH	938.85	927.62	916.38	945.53	956.77	974.68
HDFC	1324.35	1309.83	1295.32	1330.17	1344.68	1365.02
HDFCBANK	1095.40	1086.73	1078.07	1102.12	1110.78	1126.17
HEROMOTOCO	2697.10	2626.97	2556.83	2672.48	2742.62	2788.13
HINDALCO	105.70	104.77	103.83	105.63	106.57	107.43
HINDUNILVR	909.70	902.53	895.37	913.67	920.83	931.97
ICICIBANK	312.90	306.73	300.57	310.37	316.53	320.17
IDEA	170.80	169.00	167.20	172.00	173.80	176.80
INDUSINDBK	973.85	964.97	956.08	975.48	984.37	994.88
INFY	1078.95	1067.93	1056.92	1079.97	1090.98	1103.02
ITC	331.55	326.60	321.65	330.05	335.00	338.45
KOTAKBANK	690.20	683.05	675.90	694.30	701.45	712.70
LT	1779.40	1727.63	1675.87	1755.82	1807.58	1835.77
LUPIN	1664.00	1644.77	1625.53	1677.88	1697.12	1730.23
M&M	1337.90	1328.60	1319.30	1341.30	1350.60	1363.30
MARUTI	4427.05	4391.70	4356.35	4415.35	4450.70	4474.35
NMDC	101.15	100.32	99.48	101.68	102.52	103.88
NTPC	135.05	134.33	133.62	135.42	136.13	137.22
ONGC	273.65	268.63	263.62	273.07	278.08	282.52
PNB	155.05	150.88	146.72	154.82	158.98	162.92
POWERGRID	140.60	139.63	138.67	141.27	142.23	143.87
RELIANCE	1002.45	996.62	990.78	1005.23	1011.07	1019.68
SBIN	281.05	272.97	264.88	277.98	286.07	291.08
SUNPHARMA	830.95	823.30	815.65	827.65	835.30	839.65
TATAMOTORS	388.20	382.00	375.80	388.20	394.40	400.60
TATAPOWER	69.50	68.75	68.00	69.30	70.05	70.60
TATASTEEL	247.95	245.23	242.52	248.02	250.73	253.52
TCS	2509.60	2498.67	2487.73	2511.83	2522.77	2535.93
TECHM	523.60	518.90	514.20	526.20	530.90	538.20
ULTRACEMCO	3163.50	3142.55	3121.60	3161.10	3182.05	3200.60
VEDL	126.95	125.52	124.08	127.93	129.37	131.78
WIPRO	570.40	567.63	564.87	571.77	574.53	578.67
YESBANK	833.25	824.70	816.15	832.80	841.35	849.45
ZEEL	398.70	396.07	393.43	399.13	401.77	404.83



CORPORATE ACTION / BOARD MEETINGS

NSE Download Ref.No.:NSE/CML/3028:- Suspension of trading in securities of Company Clutch Auto Limited for non-compliance of certain clauses of Listing Agreementw.e.f 11-Aug-2015

NSE Download Ref No :NSE/FAOP/30304:- Exclusion of Futures and Options contracts on JPPOWER wef September 25, 2015

BOARD MEETINGS

COMPANY NAME	DATE	PURPOSE	RS. PER SH.
HONDAPOWER	4-Aug-15	Annual General Meeting / Dividend	6
APOLSINHOT	4-Aug-15	Annual General Meeting / Dividend	3
KCP	4-Aug-15	Annual General Meeting / Dividend	0.75
GESHIP	4-Aug-15	Annual General Meeting / Dividend	7
VSTIND	4-Aug-15	Annual General Meeting / Dividend	70
IDBI	4-Aug-15	Annual General Meeting / Dividend	0.75
SEAMECLTD	4-Aug-15	Annual General Meeting / Dividend	1
SHASUNPHAR	4-Aug-15	Annual General Meeting / Dividend	1
APOLLOTYRE	4-Aug-15	Annual General Meeting / Dividend	2
HIKAL	4-Aug-15	Annual General Meeting / Dividend	0.5
SHRENUJ	4-Aug-15	Annual General Meeting / Dividend	0.2
REPRO	4-Aug-15	Annual General Meeting / Dividend	10
SHREYANIND	4-Aug-15	Annual General Meeting / Dividend	1.2
WONDERLA	4-Aug-15	Annual General Meeting / Dividend	1.5
LFIC	5-Aug-15	Annual General Meeting / Dividend	3
GRANULES	5-Aug-15	Dividend	0.65
PAGEIND	5-Aug-15	Annual General Meeting / Dividend	20
GODREJCP	5-Aug-15	First Interim Dividend	
IVC	5-Aug-15	Dividend	1.3
MADHAV	5-Aug-15	Annual General Meeting / Dividend	1.5
BEARDSSELL	5-Aug-15	Dividend	1
MANUGRAPH	5-Aug-15	Annual General Meeting / Dividend	0.5

NEWS & RUMOURS:

- Gold (Spot Dollar) major support = \$1074/\$1033 & Resistance = \$1116/\$1149.
- Crude oil range->\$41 to \$51.
- U.S. Stocks Fall as Commodities from Oil to Metals Worsen Slide: - The rout in oil and industrial metals worsened, dragging down the shares of U.S. commodities producers and the currencies of resource-rich nations.
- Commodities dropped after an official gauge of Chinese manufacturing slid to a [five-month low](#) and [Iran](#) said it will be able to bolster crude production within a week of sanctions ending. Treasuries reversed losses, while the dollar pared gains as U.S. data showed manufacturing cooled last month.
- U.S. natural gas futures trade near 3-week low amid mild weather: - U.S. natural gas prices edged higher on Monday, but held near the previous session's three-week low as forecasts for mild weather across the U.S. in the weeks ahead dampened demand expectations for the fuel.
- Gold futures extend losses after U.S. consumer spending report: - Gold prices extended losses on Monday, after data showed that U.S. personal spending rose broadly in line with market expectations in June, underlining optimism over the health of the economy and supporting the case for an interest rate hike this year.
- Copper slumps to 6-year low as China PMI weakens demand outlook: - Copper prices fell to the lowest level in more than six years on Monday, after a pair of reports on China's manufacturing sector fueled concerns over a deepening slowdown in the world's second largest economy.

TRENDS & OUTLOOK – DATE: 04- Aug- 2015

PRECIOUS METALS:

COMMDITY (MCX)	S2	S1	PIVOT POINT	R1	R2
GOLD (Oct)	24480	24701	24930	25175	25491
SILVER (Sep)	31530	32700	33800	35035	36123

BASE METALS

COMMDITY (MCX)	S2	S1	PIVOT POINT	R1	R2
COPPER (Aug)	322	328	333	340	345
ZINC (Aug)	117.30	120	122.20	124.45	127.20
LEAD (Aug)	104.20	107	109	111.75	114.10
NICKEL (Aug)	660	675	694	714	736

ENERGY

COMMDITY (MCX)	S2	S1	PIVOT POINT	R1	R2
CRUDE OIL (Aug)	2730	2850	2970	3090	3265
NATURAL GAS (Aug)	162	169	176	181	187

DATE TALKS : TODAY'S ECONOMIC DATA :

RBI Rate Statement, RBA Rate Statement, Construction PMI of GBP, Factory Orders, IBD/TIPP Economic Optimism, Loan Officer Survey.



Registered Office

Indira House, 3rd Floor, 5 Topiwala Lane,
Opp. Lemington Road Police Station, Grant Road (East), Mumbai - 400007.

Corporate Office

'Ramavat House' E-15, Saket Nagar, Indore - 452018 (M.P.)

Customer Care

Tel: +91-731-4097170/ 71/ 72/ 73/ 74 M. +91 93031 72345

Email: customercare@indiratrade.com www.indiratrade.com



INSTITUTIONAL DEALING UNIT

Africa House, 5, Topiwalla Lane, Lamington Road, Mumbai, 400007

Tel: +91 22 30080678 Fax : +91 22 23870767 Email : ie@indiratrade.com

Disclaimer

This report is for private circulation within the Indira Group. This report is strictly confidential and for information of the selected recipient only and may not be altered in any way, transmitted to, copied or distributed, in part or in whole, to any other person or to the media or reproduced in any form. This report should not be construed as an offer or solicitation to buy or sell any securities or any interest in securities. It does not constitute a personal recommendation or take into account the particular investment objectives, financial situations, or any such factor. The information, opinions estimates and forecasts contained here have been obtained from, or are based upon, sources we believe to be reliable, but no representation of warranty, express or implied, is made by us to their accuracy or completeness. Opinions expressed are our current opinions as of the date appearing on this material only and are subject to change without notice.